



DIGITAL CATALOG





## ORANGE BED: INNOVATE SOLUTIONS FOR SMART SPACES

Orange Bed is a Brazilian company with over a decade of experience in the market, specializing in the manufacturing and commercialization of hardware for wall-mounted retractable beds. These beds are known as articulated beds, and they are the essence of multifunctionality.



# ORANGE BED PORTFOLIO:

Multifunctionality and Design for Every Environment



## Line **Prime**

Robustness and premium design, with superior finish and versatile application



## Line **Economic** *Plus*

Ideal for those seeking cost-benefit without compromising on quality



## Line **Basic**

Essential kit for functional projects





PRIME LINE

# THE ULTIMATE IN COMFORT AND SOPHISTICATION

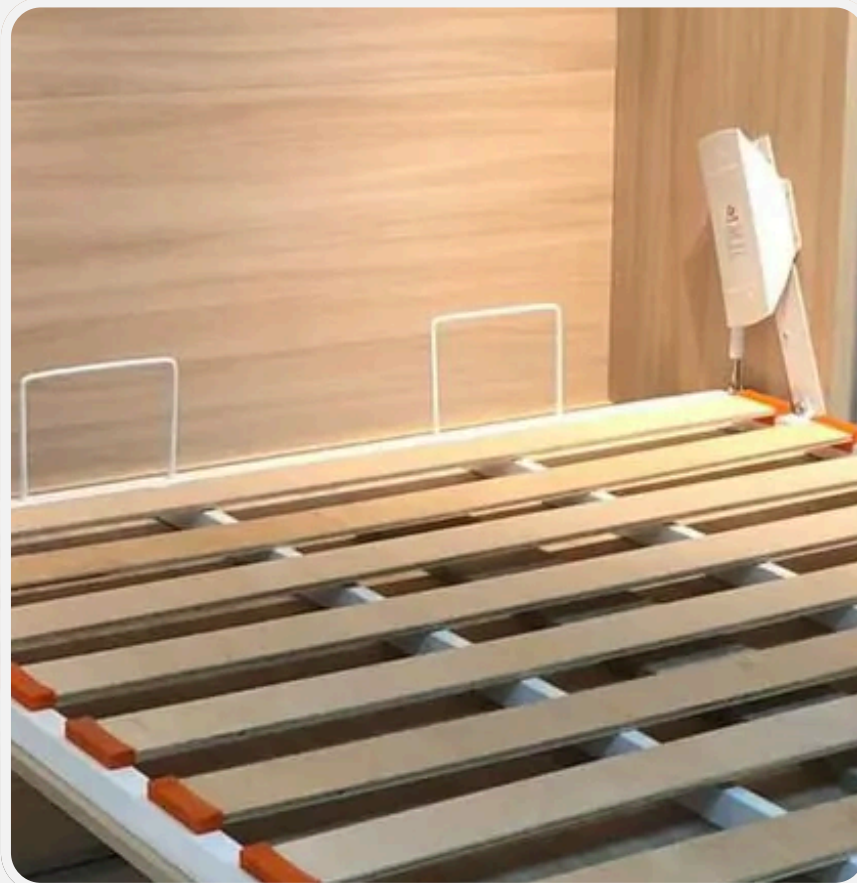
## Prime Line: Robustness and premium design

The Prime Line represents the most advanced offering in the Orange Bed portfolio. Developed for customers who demand excellence in quality, sophisticated design, and cutting-edge technology.





# WHY THE **PRIME LINE** STANDS OUT IN THE MARKET



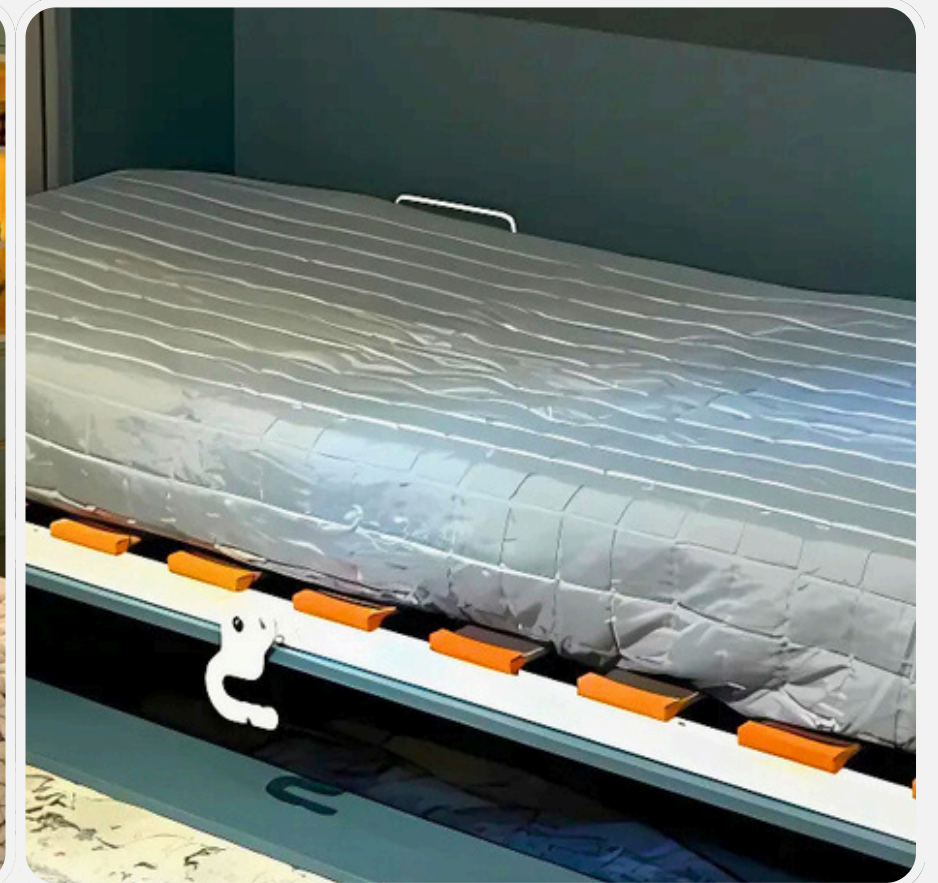
Premium Materials  
selected



Advanced Comfort  
Technology



Exclusive and  
Contemporary Design



Extended Warranty  
and VIP Support

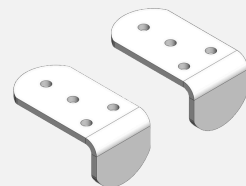




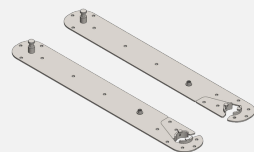
## MAIN COMPONENTS OF THE PRIME LINE



PLASTIC HANDLE  
130X110X8,00MM



BED STOPPER



AXLE BASE ASSEMBLY



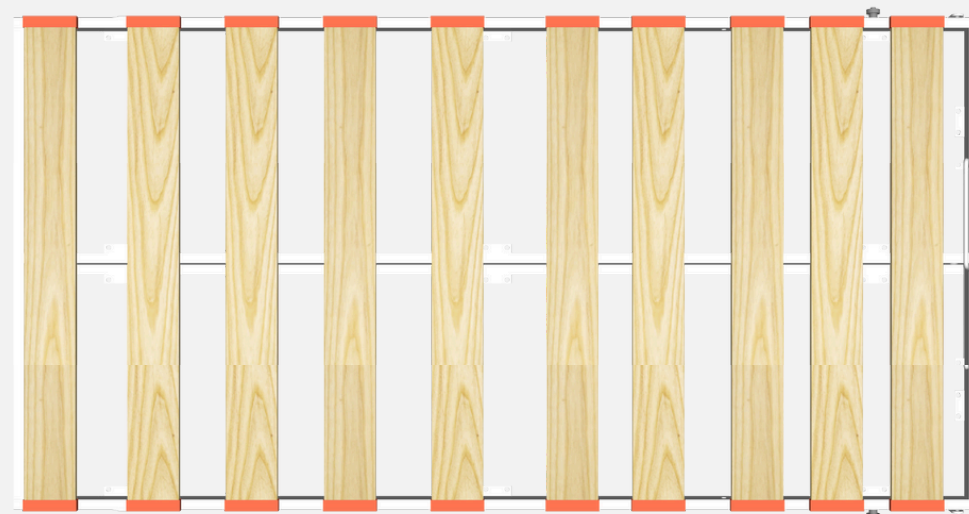
SUPPORT LOCK FIX.  
HANDLE Ø50X25MM



MATTRESS PROTECTION



PISTON



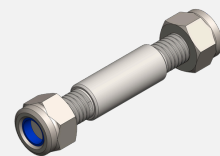
UNIVERSAL VERTICAL SINGLE PLATFORM

### SUPPORT SYSTEM:

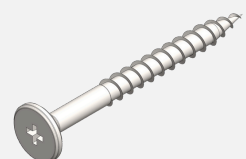
Premium Gas Pistons - Smooth and secure elevation •  
Articulated Feet Set - Stability on any surface • Reinforced  
Stoppers - Extra protection and durability

### FASTENING HARDWARE:

Specialized Screws - For wood and metal • Pivots with  
Bearings - Smooth and silent movement • Locking System -  
Guaranteed security and firmness



M8 PISTON PIN M8  
NUT



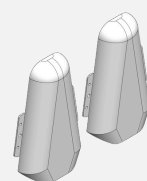
PHILLIPS FLAT HEAD  
SCREW Ø5,50X55MM



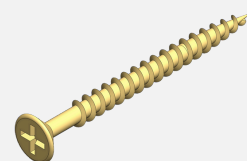
FLANGED WOOD SCREW  
Ø4,00X16MM



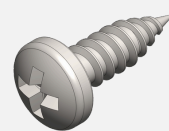
ARTICULATED FOOT ASSEMBLY



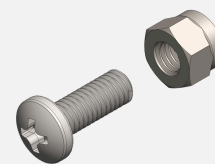
PISTON COVER



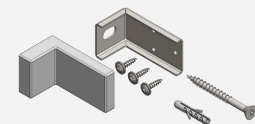
FLAT HEAD WOOD  
SCREW Ø4,00X45MM  
(NOT INCLUDED)



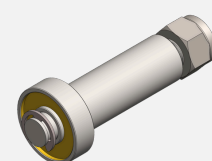
PIN HEAD WOOD  
SCREW Ø5,50X16MM



M6X16 SCREW  
M6 NUT



WALL FIXTURE ASSEMBLY



M10 PIN - M10 NUT -  
BEARING RETAINING  
RING

### PREMIUM FINISHES:

Ergonomic Handles - Design and functionality • Protective  
Covers - Refined finish • Mattress Protectors - Care for your  
investment



## MODELS **PRIME** LINE



Bunk Bed



Vertical Double



Horizontal Double



Vertical Single



Horizontal Single



Queen



Extensible



## DETAILED TECHNICAL SPECIFICATIONS

### WALL FIXING SYSTEM:

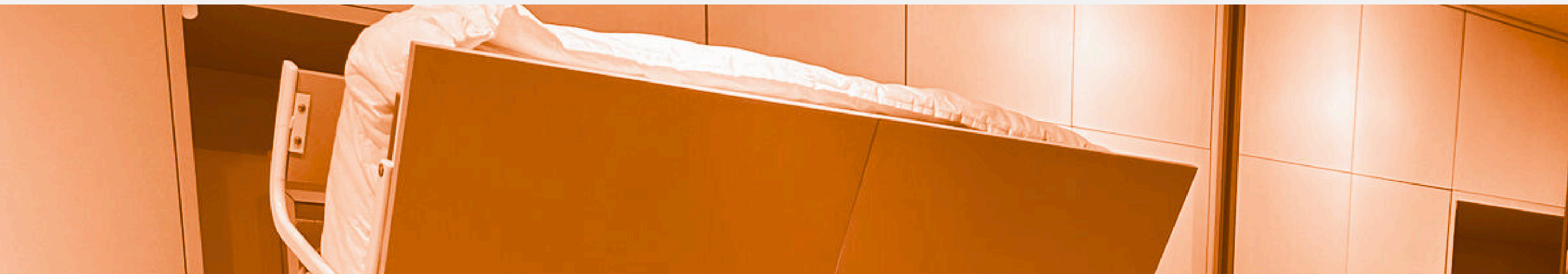
- Supports up to 120kg per person
- Bushing and screws included
- Compatible with masonry walls

### ARTICULATION SET:

- Sealed bearings
- Opening angle: 90°
- Resistance: 10.000 cycles (That corresponds to approximately 10 years)

### PROTECTIONS AND FINISHES:

- Electrostatic paint







Line  
**Prime**





ECONOMIC PLUS LINE

# INTELLIGENCE AND COST-BENEFIT FOR YOUR PROJECTS

## Economic Plus Line: Functional and Accessible

The Economic Plus Line was developed for professionals and customers seeking efficient and intelligent solutions for space optimization. Combining proven durability, functional design, and an accessible price, it offers the perfect balance between Orange Bed quality and conscious investment for residential and commercial projects.

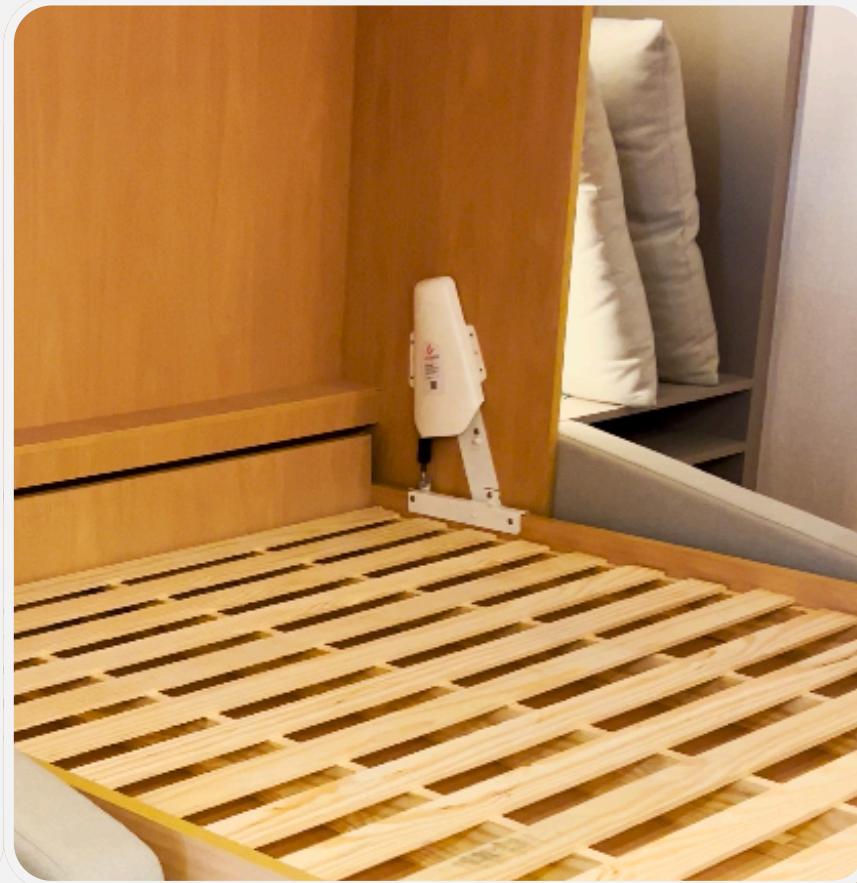




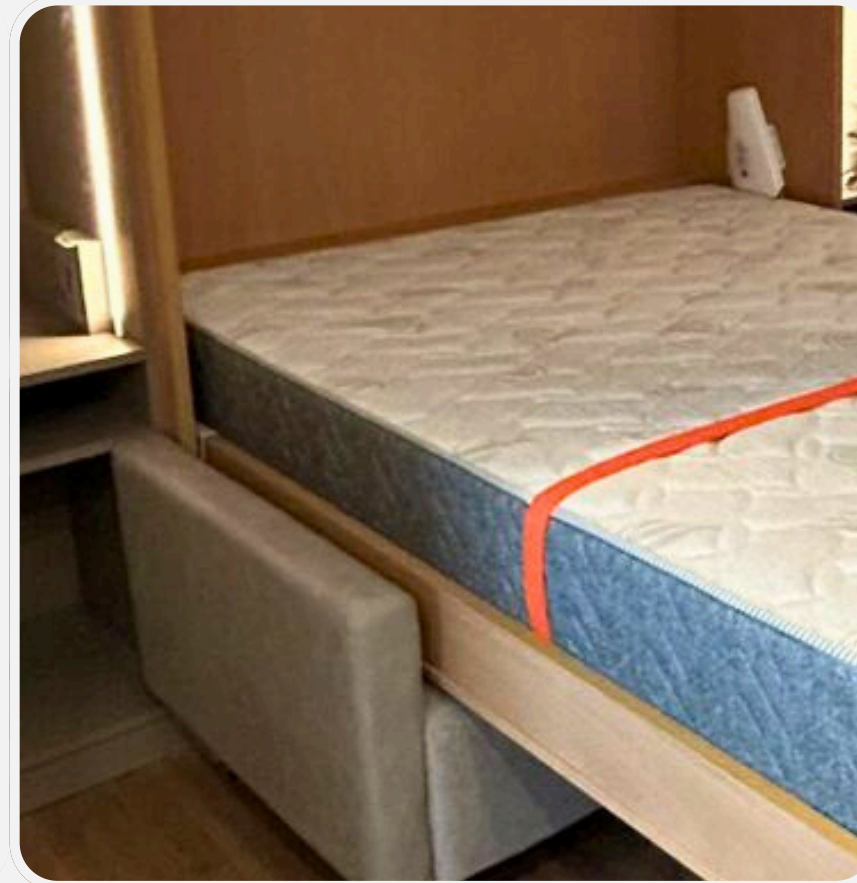
# THE DIFFERENTIALS OF THE ECONOMIC PLUS LINE



Smart Efficiency



Proven Durability



Simplified Installation

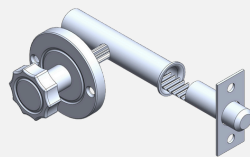


Superior Cost-Benefit

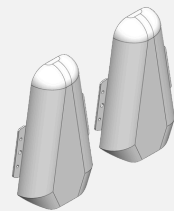




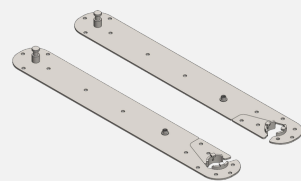
## ESSENCIAL COMPONENTS OF THE ECONOMIC PLUS LINE



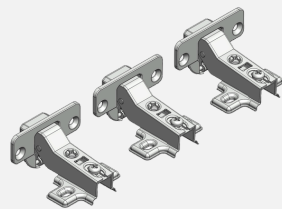
MUNDIAL ZAMAC LIP LATCH



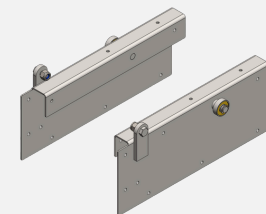
PISTON COVER



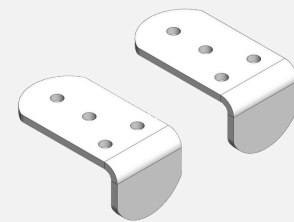
AXLE BASE ASSEMBLY



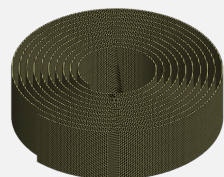
HINGE ASSEMBLY



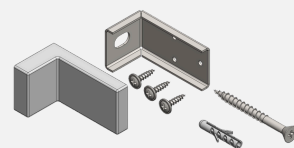
BEARING AND PISTON BASE



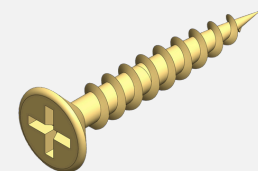
BED STOPPER



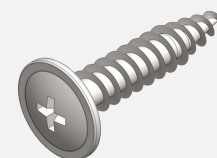
MATTRESS RETAINING STRAP



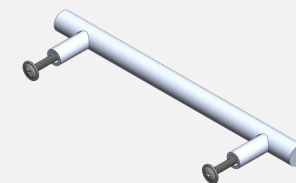
WALL FIXTURE ASSEMBLY



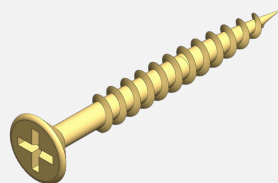
FLAT HEAD WOOD SCREW Ø4,00X25MM (NOT INCLUDED)



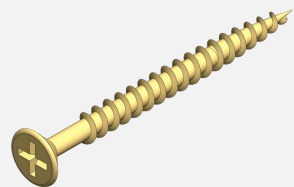
FLANGED WOOD SCREW Ø6,00X26MM



ALUMINIUM HANDLE



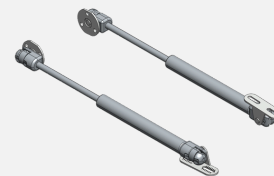
FLAT HEAD WOOD SCREW Ø4,00X35MM (NOT INCLUDED)



FLAT HEAD WOOD SCREW Ø4,00X45MM (NOT INCLUDED)



FLANGED WOOD SCREW Ø4,00X16MM



120N PISTON



PISTON

### OPTIMIZED SUPPORT SYSTEM:

Functional design that offers reliable stability with fewer components, maintaining safety.

### COMPLET FIXING KIT:

Specialized Screws - For wood and metal • Pivots with Bearings - Smooth and silent movement • Locking System - Guaranteed security and firmness

### FUNCTIONAL FINISHES:

Electrostatic paint: Durable materials with a focus on practicality and ease of maintenance, ensuring a preserved appearance

## MODELS **ECONOMIC** *Plus* LINE



Bunk Bed



Horizontal Single



Vertical Double



Vertical Single



Horizontal Double



Queen



## DETAILED TECHNICAL SPECIFICATIONS

### CAPACITY AND SAFETY:

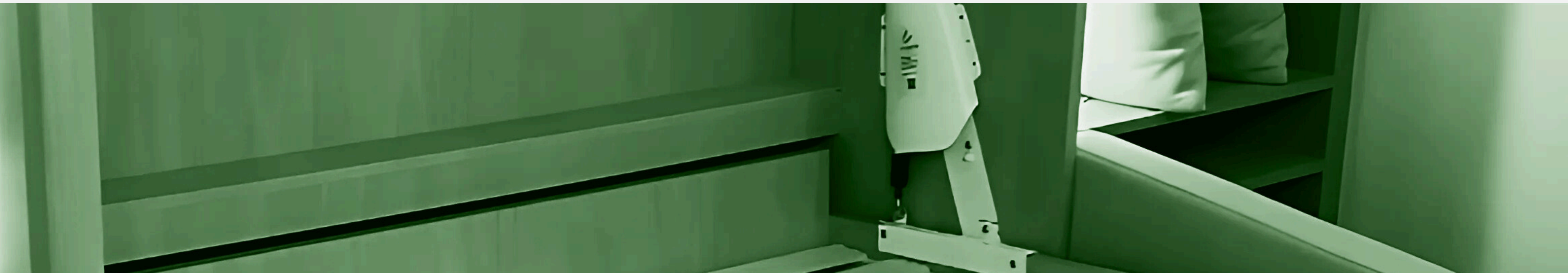
- Supports up to 100kg per person
- Complete kit of bushings and screws included
- Compatibility with masonry walls.

### MOVEMENT SYSTEM:

- Smooth and controlled opening mechanism
- Opening angle: 90° for maximum functionality
- 1 - year warranty for the shock absorber and 3 years for the hardware

### TECHNICAL CHARACTERISTICS:

- Electrostatic paint
- Does not include the steel bed frame







Line  
**Economic Plus**





BASIC LINE

# ESSENCIAL KIT FOR FUNCTIONAL PROJECTS

## Basic Line: Economical and Practical Solution

The Basic Line offers everything essential to transform any environment with functional retractable beds. Developed with the fundamental components of Orange Bed technology, it guarantees quality, safety, and practicality for projects that prioritize pure functionality and an accessible investment.





# THE DIFFERENTIALS OF THE BASIC LINE



Essential and  
Functional



Solid Orange  
Bed Base



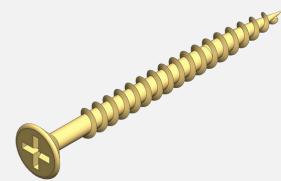
Direct Assembly



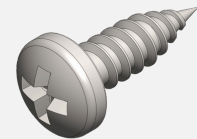
Smart Investment



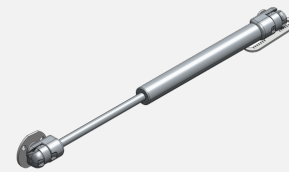
## FUNDAMENTAL COMPONENTS OF THE BASIC LINE



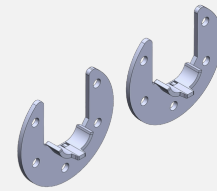
FLAT HEAD  
Ø4,00X45MM (NOT  
INCLUDED)



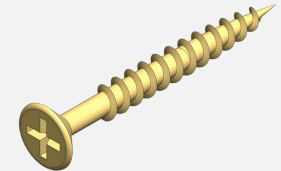
PAN HEAD WOOD  
SCREW Ø5,50X16MM



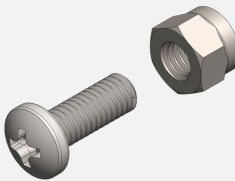
12KG (120N) SHOCK  
ABSORBER PISTON



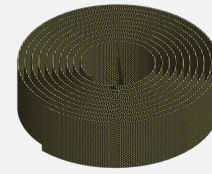
AXLE BASE



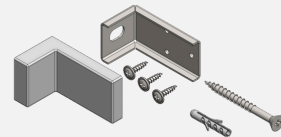
FLAT HEAD WOOD SCREW  
Ø4,00X35MM (NOT  
INCLUDED)



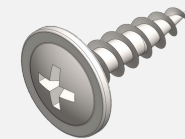
M6X16 SCREW - M6 NUT



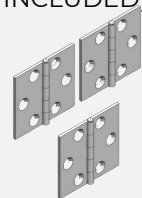
MATTRESS RETAINING  
STRAP



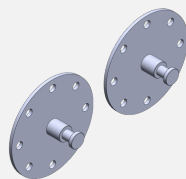
WALL FIXTURE ASSEMBLY



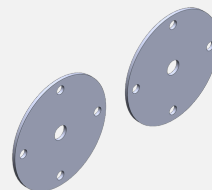
FLANGED WOOD  
SCREW Ø4,00X16MM



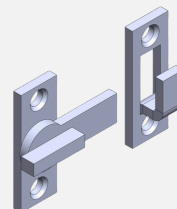
HINGE



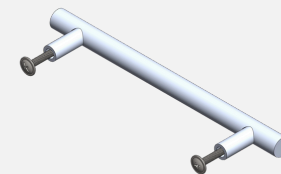
PISTON BASE



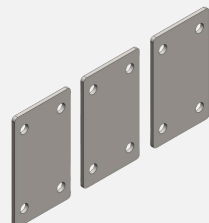
SLATTED FRAME AXLE  
FIXING PLATE



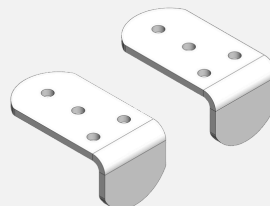
LATCH



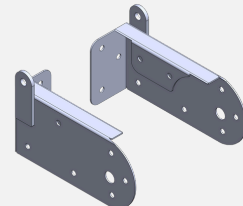
ALUMINIUM HANDLE



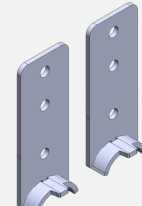
SLATTED FRAME  
FIXING PLATE



BED STOPPER



SLATTED FRAME  
PISTON BASE



AXLE BASE SUPPORT



PISTON

### ESSENTIAL SUPPORT SYSTEM:

Basic Feet Set: Functional and robust design that offers the necessary support with tested essential components

### BASIC MOUNTING KIT:

Fundamental Hardware: Essential screws and wall plugs for secure fastening, including only what is necessary for effective installation

### PRATICAL FINISHES:

Functional Coatings: Durable materials with a focus on practicality, ensuring resistance and easy cleaning

## MODELS **BASIC** LINE



Vertical Double



Horizontal Double



Horizontal Single



Vertical Single



## DETAILED TECHNICAL SPECIFICATIONS

### CAPACITY AND SAFETY:

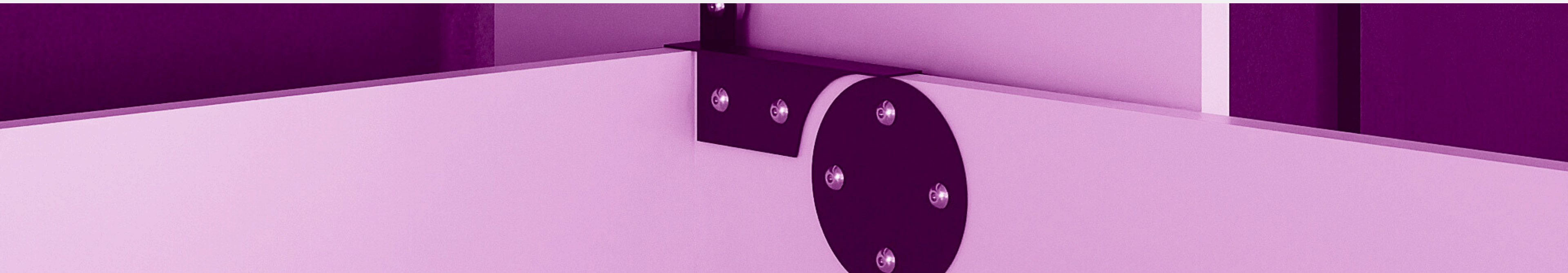
- Supports up to 90kg per person
- Basic fixing kit included
- Compatibility with masonry walls

### MOVEMENT SYSTEM:

- Functional opening mechanism
- Opening angle: 90° for full use

### TECHNICAL CHARACTERISTICS:

- Standard resistant finish
- Basic and accessible maintenance
- Essential protection against wear










Line  
**Basic**





## COMPARISON OF THE THREE LINES

Characteristics	 Prime	 Economic Plus	 Basic
Target Audience	Those who desire Premium projects	Costumers looking for the best Cost-Benefit	For those seeking functionality
Main Differential	Robustness	Economical kit	Versatility
Hardware	Complete steel structure	Highly customizable	Simple and robust
Recommended for:	Specialized furniture stores	Hardware resellers	Factories and Carpentry shops



## **TRANSFORM SPACES. TRANSFORM LIVES.**

We don't just sell retractable beds. We sell freedom of space, quality of life, and intelligent solutions for the modern world.